



Groups and Schools Preparation Guide

**Welcome to your LEGOLAND® Discovery Center and
SEA LIFE Kansas City Adventure Preparation Station!**

**This guide is to help you and your group get ready for your
upcoming visit. General FAQs, the Booking Process, Health and
Safety, and so much more are all covered to make sure everyone has
the most FIN-tastic and BRICK-tastic time!**

**Please contact kc.groups@merlinentertainments.biz with any questions!
And remember: NO CASH!**

2475 Grand Boulevard, Kansas City, MO 64108



Think and Look Before you Book!

General FAQs

Bookings must be made at least 7 days in advance of visit.

If booking with a workshop, please book at least 3 weeks in advance.

Entry is not guaranteed if no reservation is made!

You must have at least 10 people use group or school discount rates

We can ONLY accept Tax-IDs from Missouri!

Title 1 Schools qualify for additional discounted rates

We are a CASH-FREE Attraction!

Purchase a Combo Ticket to see both attractions for less!

Our attractions are self-guided and take approx. 90 minutes each

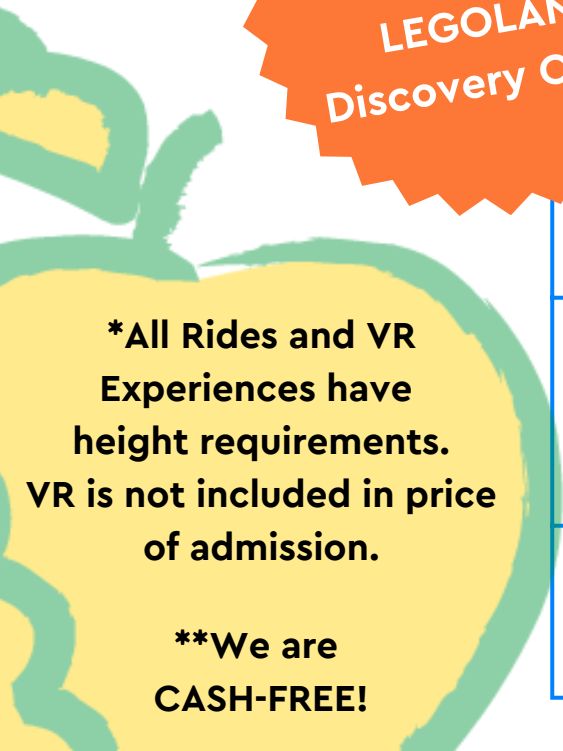
Children under 2 do not need a ticket

Can't use a credit card online to book? Email us to make a reservation or pay with check



**SEA LIFE
Kansas City
Vs.
LEGOLAND
Discovery Center**

SEA LIFE Kansas City	LEGOLAND® Discovery Center
VR Experience*	2 Rides* VR Experience* Coffee Shop**
5 Workshops K - 12th Grade	5 Workshops K - 5th Grade
No age requirements for entry and admission	Parties must include at least one child 17 or younger
Last admission is 1 hour before close	Last admission is 2 hours before close



***All Rides and VR Experiences have height requirements.**

VR is not included in price of admission.

****We are CASH-FREE!**

Time To Book Your Tickets!



Step-By-Step

1. Click the button in the table below that applies to your visit!
2. Select the attraction(s) you want to purchase tickets for
3. Type in how many PAID* adults and children/students are in your party
4. Select your date and time
5. Type your Group or School Name in the field(s) provided
6. If applicable, click on the workshop tab(s) to add-on a workshop to your order (see more on next page)
7. After reviewing your cart, fill out your billing and payment info, and submit your order



LEGOLAND Groups	LEGOLAND Schools	SEA LIFE Groups	SEA LIFE Schools
<u>Tax-Exempt In Missouri</u>	<u>Tax-Exempt In Missouri</u>	<u>Tax-Exempt In Missouri</u>	<u>Tax-Exempt In Missouri</u>
<u>Not Tax-Exempt In Missouri</u>	<u>Not Tax-Exempt In Missouri</u>	<u>Not Tax-Exempt In Missouri</u>	<u>Not Tax-Exempt In Missouri</u>
	<u>Title 1 AND Tax-Exempt In Missouri</u>		<u>Title 1 AND Tax-Exempt In Missouri</u>
	<u>Title 1 and Not Tax-Exempt in Missouri</u>		<u>Title 1 and Not Tax-Exempt in Missouri</u>



*Do the Math!

Groups: 1 Free Adult Ticket per 10 Children's Tickets
Schools: 1 Free Adult Ticket per 5 Student Tickets

Free Tickets will be added on automatically at the end of your purchase!



Want to visit both attractions? All the links above have the option to book for just one attraction, or both! Go crazy and add a workshop too!



Oh no! How Do I Fix That?

Rescheduling

If you need to reschedule your tickets, please let us know at least 1 week in advance of your visit. If you have a workshop, please let us know at least 2 weeks in advance.



Things happen!
When in doubt,
email us!

**KC.Groups@Merlin
Entertainments.biz**

Cancelations

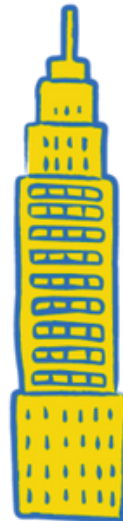
Cancelations must be made at least 48 hours prior to your visit.
Tickets expire on the date and time they are purchased for.
There are no refunds on unused tickets after your date visit has passed.

Ticketing Troubles

Need more tickets? You can add them on to your order the day of your visit!

Need fewer tickets? We can refund you - just let us know! (Only on Credit Card orders)

Credit card not working? Remove any special characters from the card's name, and try purchasing in a browser not connected to your school's or organization's internet!



Health, Safety, and Accessibility!

Stay Healthy!

- Hand sanitization stations are located in both attractions
- During your visit, both attractions only accept Tap-to-Pay (such as Apple Pay) and debit/credit cards to limit the spread of illnesses. No Cash!
- Please do not visit if you are displaying COVID-19 symptoms, living with someone who is, or if you are feeling ill

Stay Safe!

- Take pictures! Just please turn off flash for the safety of our animals, and no cameras on any rides
- No large bags or luggage! We do not have storage spaces for these items except for pre-packed lunches in coolers and totes.
- No weapons of any kind!
- No running in the attractions, and please wear closed-toe shoes!
- Pre-sort your guests into small groups - You must stay together! No students or children can be unaccompanied for any reason.

We are Sensory Inclusive™ Certified through Kulture City! Should you need sensory bags or any other accommodations, please email us so that we can assist you!

We'll Stay Accessible!

- Both attractions are ADA accessible and compliant.
- Wheelchairs and strollers are permitted in both attractions.
- We do not have wheelchairs to rent, but Crown Center does on a first come basis. 816.274.7251
- Service Animals are welcome inside the attractions - Dog or miniature horses only! Animals cannot ride any rides, and must be leashed by the owner at all times. We cannot allow entry to emotional support animals.

Height Requirements for LEGOLAND:

- **Merlin's Apprentice: 36 inches to ride with an adult. 48 inches to ride alone.**
- **Kingdom Quest: Riders must have control of their own posture. 1 chaperone must be in every chariot, regardless of age or height.**

Height Requirements for VR:

- **LEGOLAND: 40 in to ride**
- **SEA LIFE: 36 in to ride**





We're Here! Now what?

Parking

Cars can Park in Crown Center's Parking Garage off Grand Blvd.

We validate parking for up to 6 hours.

Buses/Vans can drop groups off using pull off located off Grand Blvd, in front of the Crown Center Square.

Any vehicles taller than 6.5' can park along Warwick Trafficway between 26th and 27th Streets, and on McGee Street Trafficway north of 26th Street. Buses and Vans cannot park in the garage.

Entering the Attraction

1. Pre-sort the guests into smaller groups outside of the admissions doors along the glass diving walls.
2. Send the group leader to check-in at the admissions desk, while the rest of the group waits outside.
3. Our staff will go over some rules with your group please assist us in keeping your group together!

Lunches

No outside food or beverage can be brought into the attractions. We can store bagged lunches that are in coolers or similar containers for your group so you may eat them after visiting.

You can eat as a group in Crown Center's Lunchland, outside in the Crown Center Square, or at any of the restaurants nearby:

[Crown Center Directory | Food](#)

If you are seeing both attractions, you can eat lunch in between either one to break up your day!

Can't wait to see you all!

More to Explore!

Crown Center: Shop, Eat, & More!

- Kaleidoscope
- Coterie Theatre

Union Station: 1 Block Away!

- Science City
- Planetarium
- Model Trains
- City Theatre

National WWI Museum:
America's Only One!

Money Museum:
See the Federal Reserve Bank!

Nelson Atkins Museum:
A true encyclopedia of art!

