



# FAMILY FIELD TRIP



## Kingdom Quest Laser Ride

Jump into your chariot and use your laser skills to zap trolls and skeletons. The better your aim, the higher your score!

Record your score and the score of two other people, or ride three times and record all your scores below. Then find the median score and circle it.

*Hint: The median score is the middle score when they're in numerical order.*



## LEGO® Racers: Build & Test

Use the special wheels & axles in your brick bag to complete the following challenges in the LEGO Racers Build & Test Zone.

Create a car that's built for SPEED and race it against yourself on our track. Keep trying until you build the fastest car!

*Tip from Master Model Builder: Add more weight just in front of your back wheels to get the speed you need!*



Now, build a car that's made to LAST! Launch it down the test ramp to see if it makes it to the bottom of the track in one piece. Keep trying until your car doesn't lose any bricks

*Tip from Master Model Builder: Stagger your LEGO bricks... think of a brick wall!*



## Racing Math

- 1. Which is faster; a car traveling at 30 meters per second (m/s) or 50 mph? (Hint: 1 meter per second = 2.24 miles per hour)
- 2. Dave's LEGO car traveled down a quarter-mile track in 30 seconds. Calculate his car's average speed in meters per second (m/s) (Hint: A quarter-mile is 402 meters)

Formula: \_\_\_\_\_ Meters ÷ \_\_\_\_\_ Seconds =

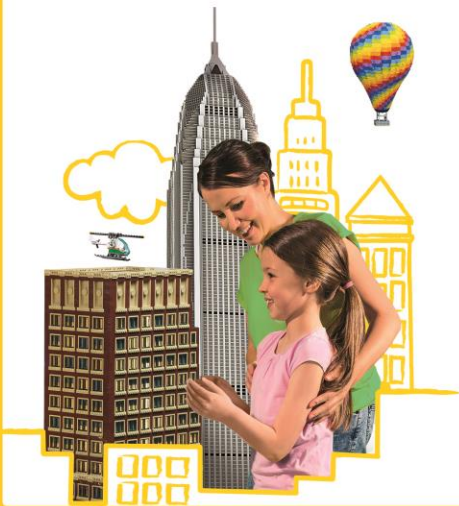
## MINILAND Activity - My Favorite Memory

Use MINILAND as inspiration to build and retell a story about an experience you've had in your own city using LEGO bricks as your tool.

**Setting the scene:** As you explore MINILAND, ask your child(ren) some of the following questions:

- What buildings do you see in MINILAND?
- How many places have you visited?
- What did you do there?
- Who were you with?
- Did you enjoy it?
- Do you have any stories to share?

**Building the story:** Write down your favorite experience and one detail that made the event so special. Then head over to any build zone to recreate your scene using LEGO bricks.



---

---

---

---

---

---

---

---

## LEGO® Earthquake Tables

An earthquake is the perceptible shaking of the surface of the Earth that is *usually* caused by the movement of tectonic plates. It's very important to build sturdy buildings to keep people safe during earthquakes.

Try to build a structure that is at least 12 bricks high that withstands strong (red) tremors for at least 10 seconds.

What level of tremors did your building withstand before toppling over? Circle your answer below.



**LOW (GREEN)**    **MODERATE (YELLOW)**    **STRONG (RED)**



## CONGRATULATIONS!

You've completed the Family Field Trip activity guide. Be sure to visit [www.LEGOLANDDiscoveryCenter.com](http://www.LEGOLANDDiscoveryCenter.com) for more activities to do on your next visit or at-home!